

Started 1.1.2019  
Nbr 1 choice for new students  
in Finland, 2021



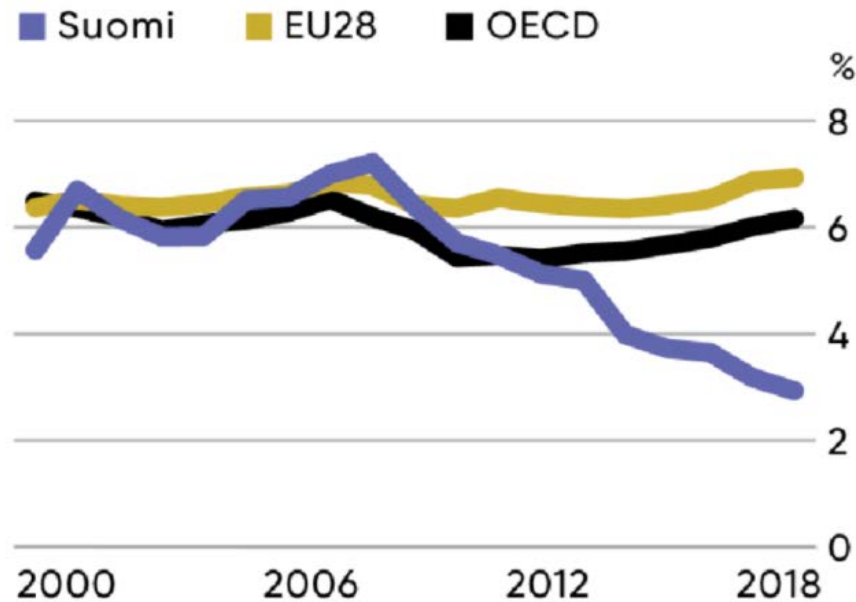
# Natural collaboration with Tampere University

- enhance current collaboration
- identify new opportunities
- connect multidisciplinary teams



# More discussion and dialogue is needed => from ad-hock to continuous co-creation

○ Tampereen yliopisto



Korkeakoulujen rahoitus elinkeinoelämän toimijoilta, Suomi verrattuna EU28- ja OECD-maihin. Lähde OECD, Main Science and Technology Indicators

## KEY MESSAGE

TAMPERE UNIVERSITY HAS OVER  
50 YEAR OF EXPERIENCE WORKING  
WITH COLLABORATORS

WE WANT TO BE PART OF THE  
SOLUTION – NOT PART OF THE  
PROBLEM

[Check article](#)

[WEBLINK FOR MORE NAMES: FACULTIES](#)

**SUPPORT SERVICES**

Vice President  
for Research

Research Support

Vice President  
for Education

Education and  
Continuous Learning

Director of  
Finance

Operations  
Management

Director,  
People and  
Communications

People and  
Communications

Provost

Management Support

Built  
Environment  
(BEN)

Education  
and Culture  
(EDU)

Engineering  
and Natural  
Sciences  
(ENS)

Computing  
Sciences  
  
Information  
Technology  
and  
Communi-  
cation  
Sciences  
(ITC)

Management  
and  
Business  
(MAB)

Medicine  
and Health  
Technology  
(MET)

Social  
Sciences  
(SOC)

**KEY MESSAGE > 300 PROFESSORS  
LOT OF COLLABORATION OPPORTUNITIES**

Dean

Dean

Dean

Dean

Dean

Dean

Dean

President

# Partner for collaborators of all size

Research & development	Competence development	New talent
<p><b>Commissioned research</b> solutions tailored for business needs</p>	<p><b>Continuing education</b> Enhanced expertise through off-the-shelf or tailored training</p>	<p><b>Bachelor's and master's theses</b> additional resource for analysis and development work</p>
<p><b>Research cooperation</b> Participation opens the doors to an extensive research and cooperation community - Global consortia's, EU,BF, AKA funding etc.</p>	<p><b>Doctoral education</b> Gaining doctorate while working</p>	<p><b>Teaching cooperation</b> Expert lecturers, new ideas through project work or student innovation projects</p>
<p><b>Co-creation platforms</b> Industry development within international university-industry networks</p>	<p><b>Networking events</b> Research findings and expert contacts</p>	<p><b>Student recruitment</b> Job advertisements in the digital tools and on-campus recruitment events</p>
<p><b>Measuring and analysis services</b> Unbiased information that supports product development, great laboratory assets</p>	<p><b>Doctoral school</b> Doctoral school of industry innovations</p>	<p><b>Doctoral recruitment, staff exchange</b> Scientific in-depth expertise in support of corporate renewal, dual roles</p>
<p><b>Foresight Services</b> Evaluate new ideas or plan further development using data, workshops, 3<sup>rd</sup> horizon</p>		

**policy: EVERYONE CAN ACT**

**KEY MESSAGE**

# 3 sample collaboration vehicles

- CO-CREATION PLATFORMS • <http://www.sochub.fi>
  - Ecosystem approach: Core partners, SIG group, 3<sup>rd</sup> level

## What?

System-on-Chip (SoC) Hub is a joint effort to design new SoCs for 5G, AI, imaging and security applications. SoC Hub collects and boosts national competence from application requirements to prototype chips and completes the overall expertise in embedded systems and microelectronics in Finland. In addition, the project strengthens European SoC design competence with connections to the ecosystems in the field.

- Doctoral school of industry innovations <http://dsii.fi>

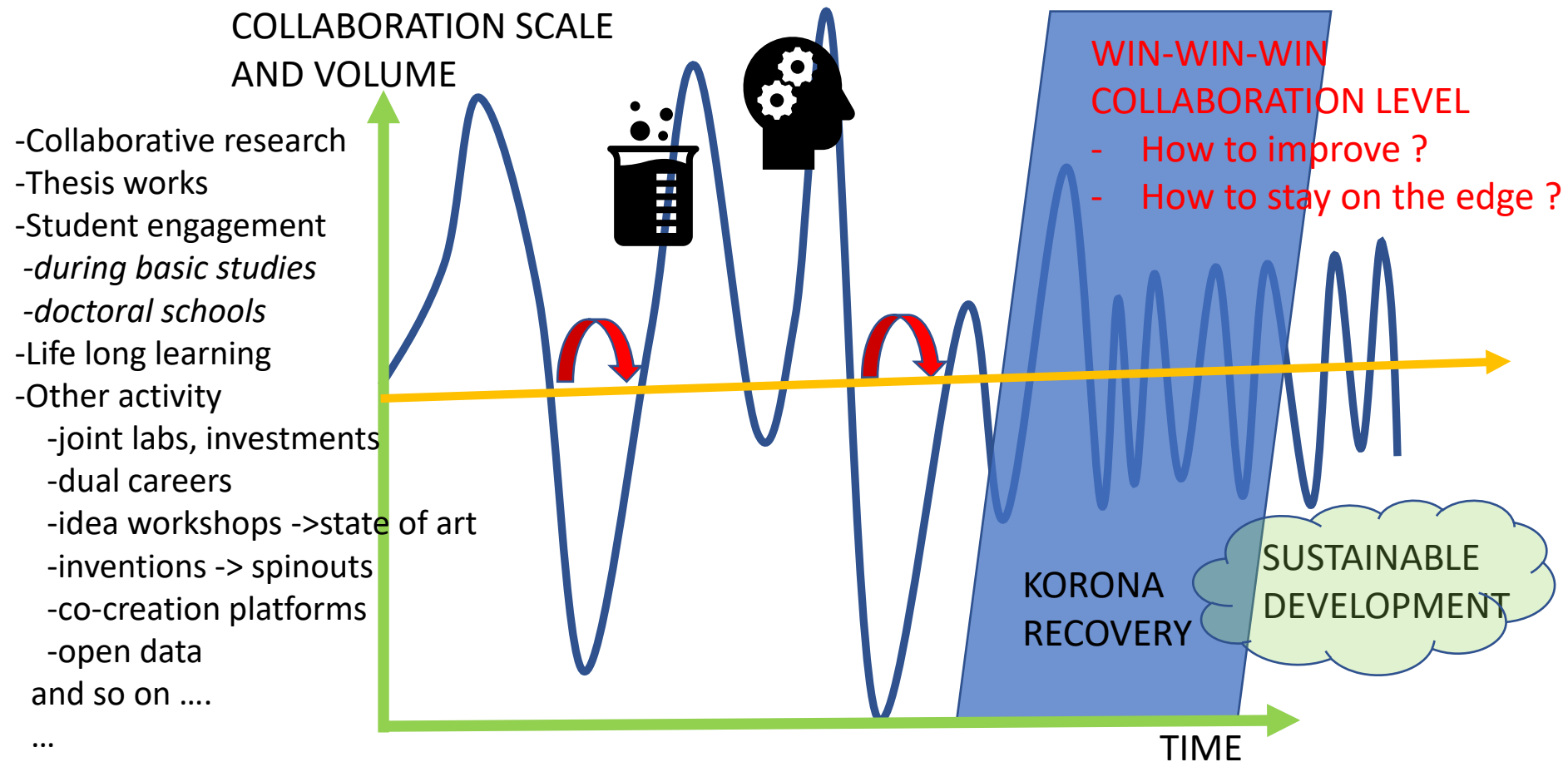
**WHERE INDUSTRY**   
**MEETS INNOVATION.**

- [ECIU](#) Network – case Toyota challenge



[Hubs.fi](http://Hubs.fi)

# Managing the expectations – WIN – WIN - WIN



# Contact us - old and new !

- Use your existing contact network
  - Professors, teachers, staff
- Contact us to create new networks or to outreach new ways of collaboration

[industry@tuni.fi](mailto:industry@tuni.fi)

+358 29 452 4500

[Pasi.Vakaslahti@tuni.fi](mailto:Pasi.Vakaslahti@tuni.fi)

+358405116128

- Discover collaboration ways and examples

- <https://www.tuni.fi/en/services-and-collaboration>

## KEY MESSAGE

WE ARE NOT HIDDEN AND WE  
ARE NOT IN “SILO”

EMME OLE PILOSSA EMMEKÄ  
SIILOSSA